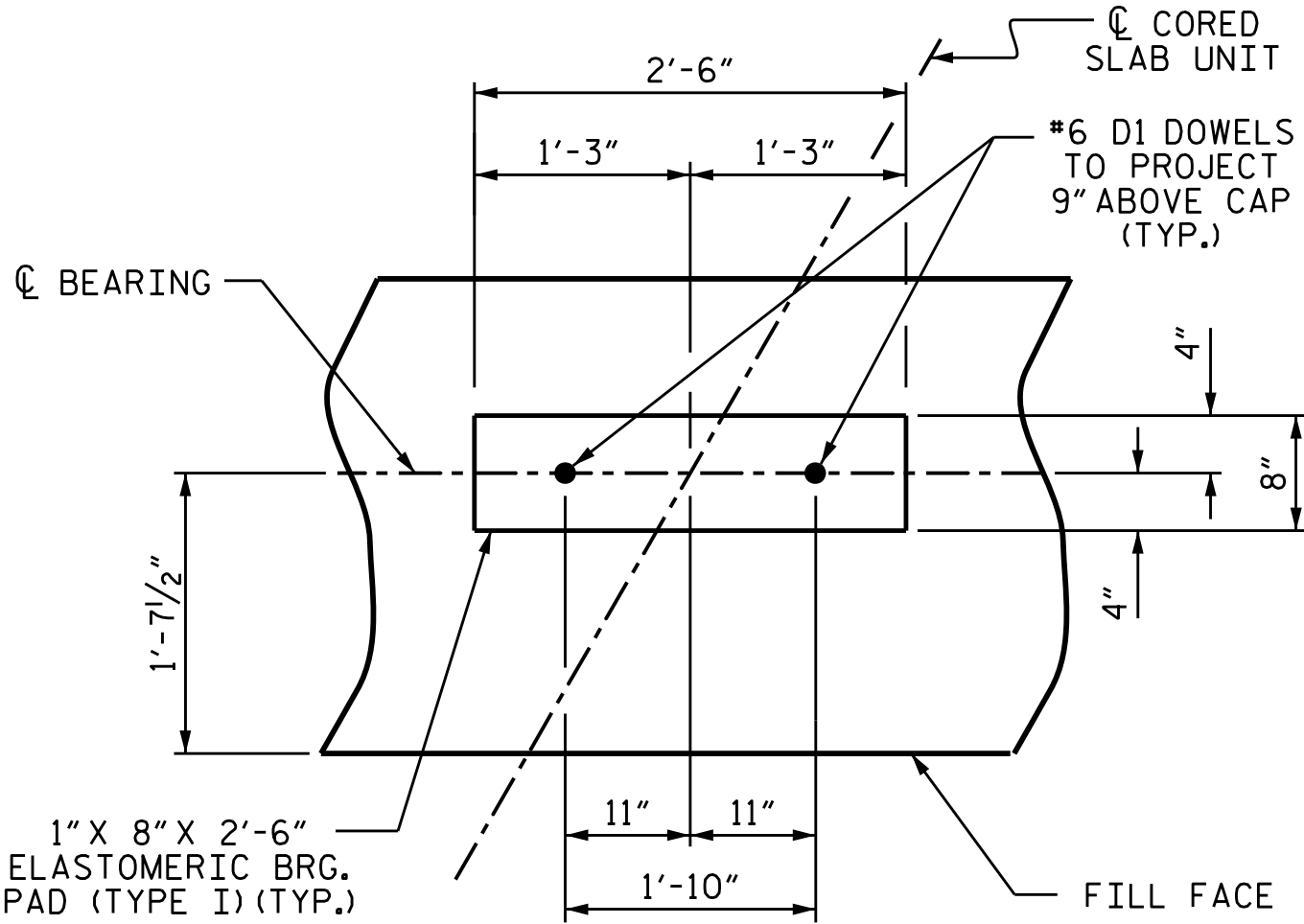


BAGGED STONE AND PIPE SHALL BE PLACED IMMEDIATELY AFTER COMPLETION OF END BENT EXCAVATION. PIPE MAY BE EITHER CONCRETE, CORRUGATED STEEL, CORRUGATED ALUMINUM ALLOY, OR CORRUGATED PLASTIC. PERFORATED PIPE WILL NOT BE ALLOWED.

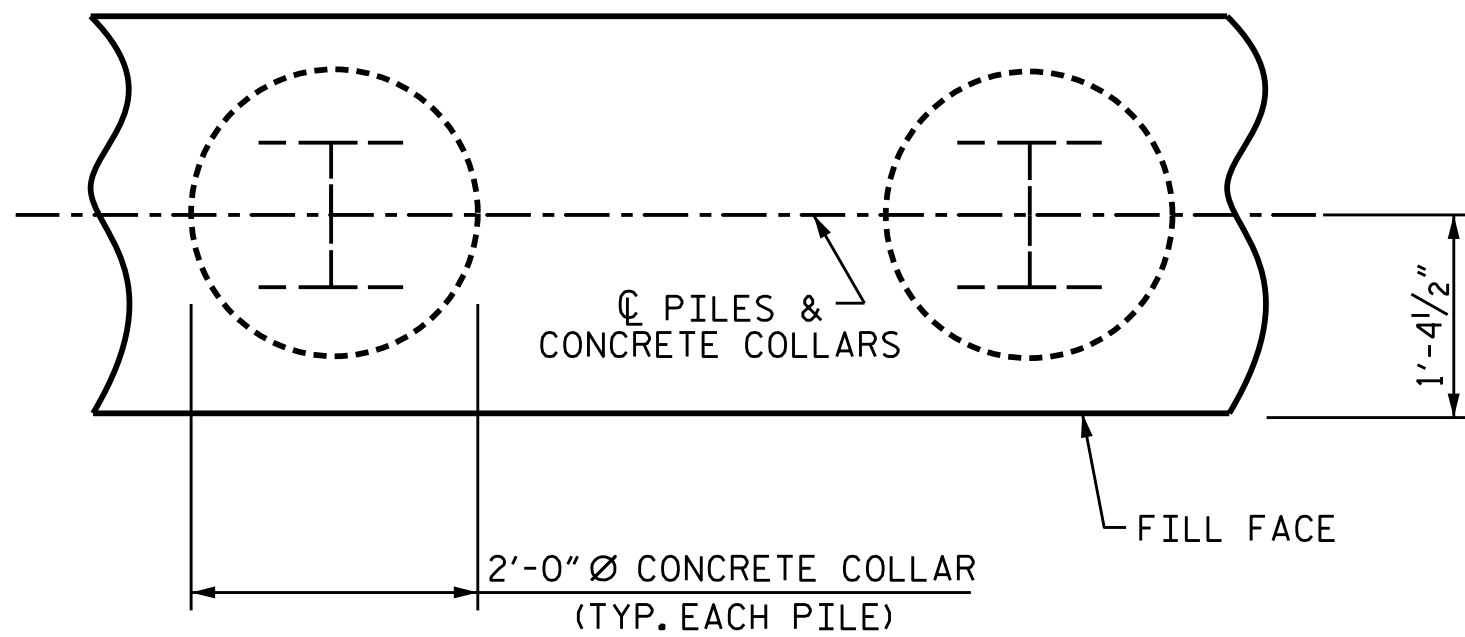
BAGGED STONE SHALL REMAIN IN PLACE UNTIL THE ENGINEER DIRECTS THAT IT BE REMOVED. THE CONTRACTOR SHALL REMOVE AND DISPOSE OF SILT ACCUMULATIONS AT BAGGED STONE WHEN SO DIRECTED BY THE ENGINEER. BAGS SHALL BE REMOVED AND REPLACED WHENEVER THE ENGINEER DETERMINES THAT THEY HAVE DETERIORATED AND LOST THEIR EFFECTIVENESS.

NO SEPARATE PAYMENT WILL BE MADE FOR THIS WORK AND THE ENTIRE COST OF THIS WORK SHALL BE INCLUDED IN THE UNIT CONTRACT PRICE BID FOR THE SEVERAL PAY ITEMS.

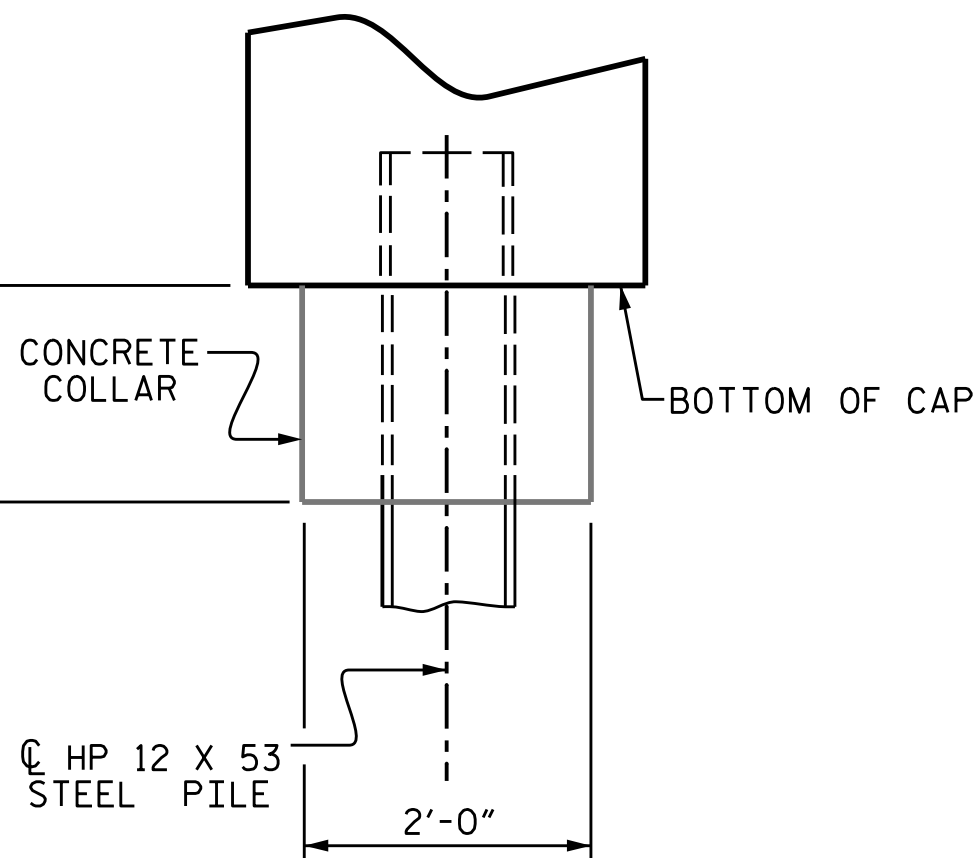
TEMPORARY DRAINAGE AT END BENT



DETAIL "A"



PLAN



ELEVATION

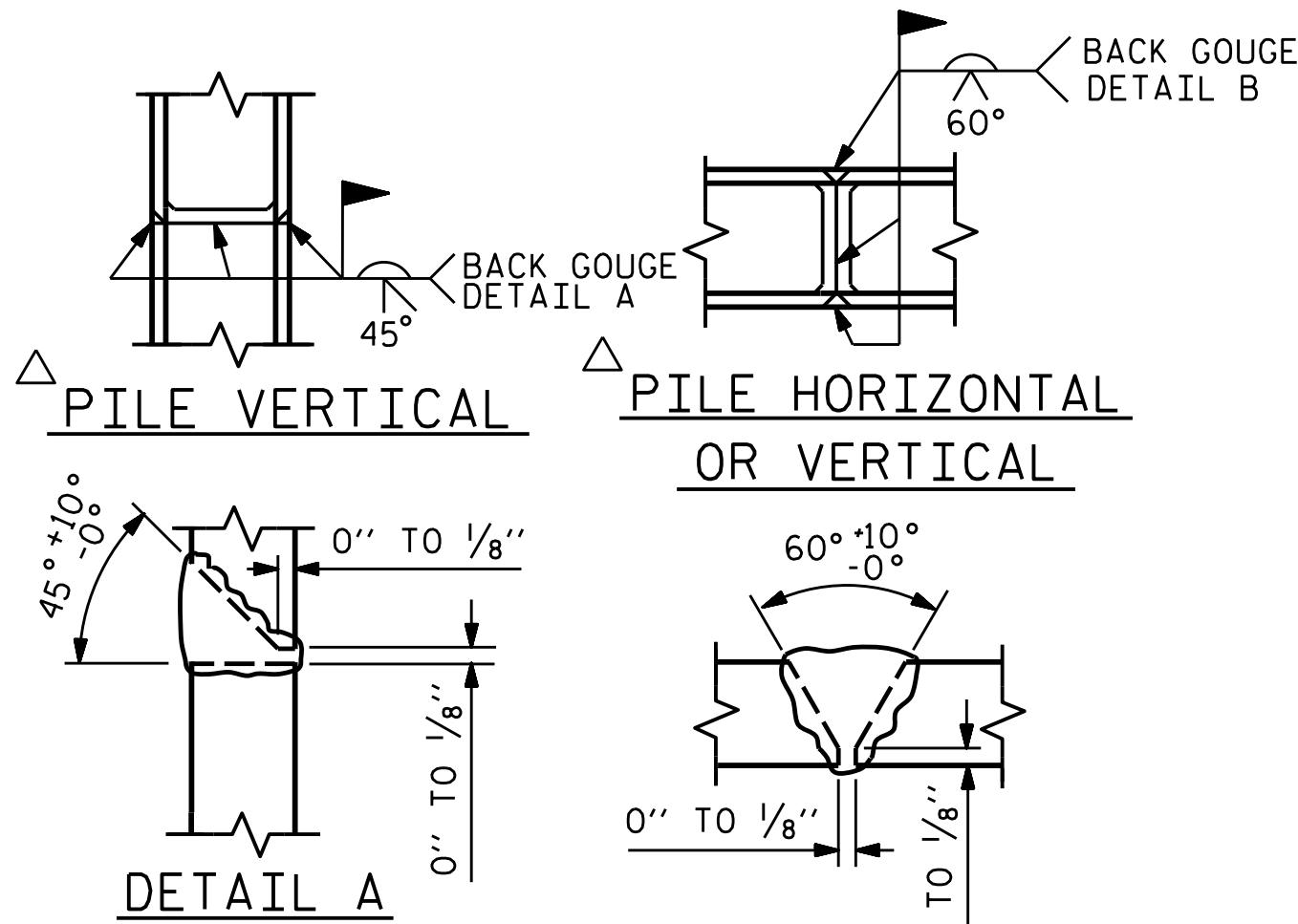
CORROSION PROTECTION FOR STEEL PILES DETAIL



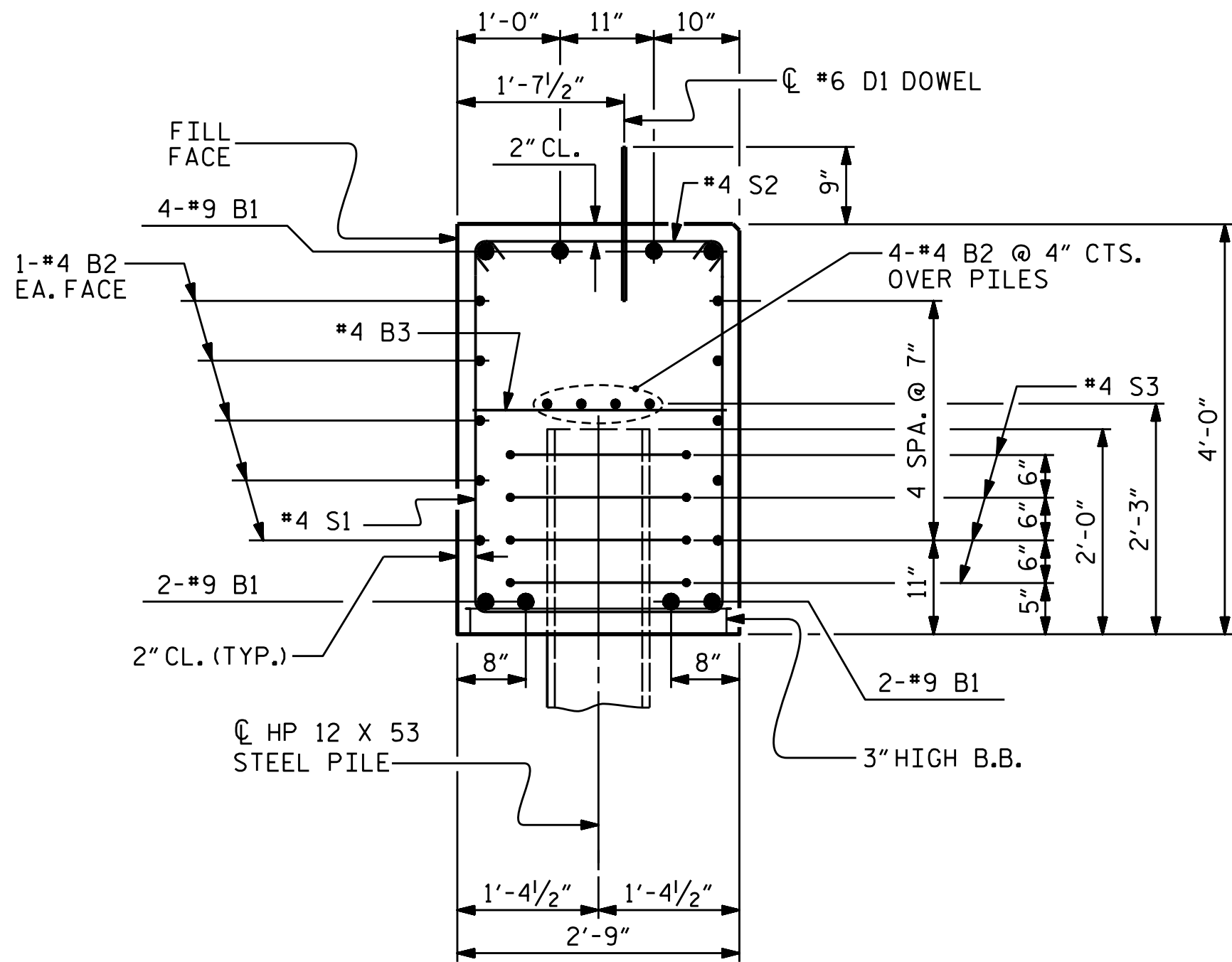
VHB Engineering NC, P.C. (C-3705)
940 Main Campus Drive, Suite 500
Raleigh, NC 27606

DRAWN BY : C.P. MALAGON	DATE : 08/2025
CHECKED BY : E.C. PHELPS	DATE : 08/2025
DESIGN ENGINEER OF RECORD: W.K. FISCHER	DATE : 09/2025

9/15/2025
c:\bms\vhb-pw-01\d0248436\401.019_BP14-R038.EB06.dgn
cmalagon



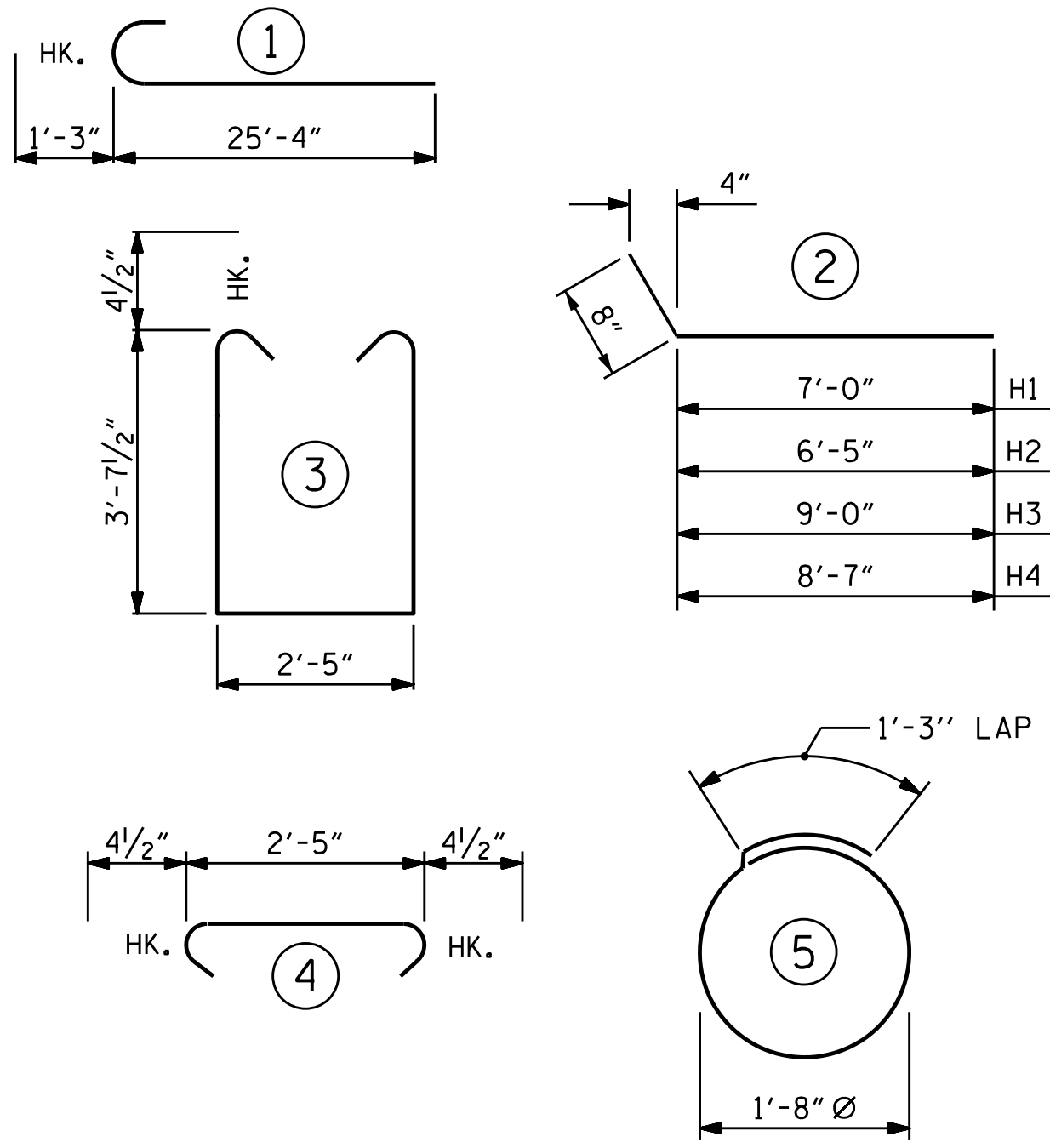
PILE SPLICE DETAILS



SECTION A-A

(CONCRETE COLLAR NOT SHOWN FOR CLARITY.
SEE "CORROSION PROTECTION FOR STEEL PILES DETAIL.")

BAR TYPES



ALL BAR DIMENSIONS ARE OUT TO OUT.

BILL OF MATERIAL

FOR END BENT 2

BAR	NO.	SIZE	TYPE	LENGTH	WEIGHT
B1	16	#9		26'-7"	1446
B2	28	#4	STR	23'-11"	447
B3	11	#4	STR	2'-5"	18
D1	20	#6	STR	1'-6"	45
H1	10	#4	2	7'-8"	51
H2	10	#4	2	7'-1"	47
H3	10	#4	2	9'-8"	65
H4	10	#4	2	9'-3"	62
K1	8	#4	STR	3'-10"	20
K2	4	#4	STR	6'-8"	18
K3	4	#4	STR	5'-10"	16

S1	54	#4	4	10'-5"	376
S2	54	#4	5	3'-2"	114
S3	20	#4	6	6'-6"	87

V1	56	#4	STR	6'-2"	231
----	----	----	-----	-------	-----

REINFORCING STEEL
(FOR ONE END BENT) 3043 LBS.

CLASS A CONCRETE BREAKDOWN
(FOR ONE END BENT)
POUR #1 CAP, LOWER PART OF WINGS & COLLARS 20.8 C.Y.

POUR #2 UPPER PART OF WINGS 2.4 C.Y.

TOTAL CLASS A CONCRETE 23.2 C.Y.

PROJECT NO. **BP14-R038**

POLK COUNTY

STATION: **13+52.50 -L1-**

SHEET 3 OF 3

STATE OF NORTH CAROLINA
DEPARTMENT OF TRANSPORTATION
RALEIGH

SUBSTRUCTURE

END BENT 2
DETAILS

REVISIONS					SHEET NO.
NO.	BY:	DATE:	NO.	BY:	
1			3		S-28
2			4		TOTAL SHEETS 32

DOCUMENT NOT CONSIDERED
FINAL UNLESS ALL
SIGNATURES COMPLETED

